



— TREZOR —  
HIGH SECURITY SAFES  
HANDCRAFTED IN HUNGARY

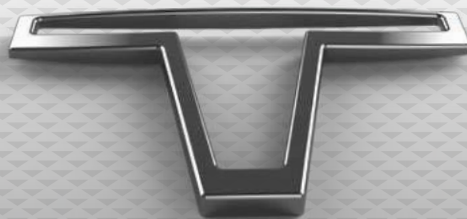
Dear **Cognoscente,**

You are holding in your hands, our irresistible invitation to the world of extraordinary high-security safes for exceptional rifles, fine timepieces and outstanding valuables. Turn the pages and step into the universe where each bespoke handcrafted masterpiece is built with the closest attention to details for people who really appreciate the difference.

Respectfully yours,

*Prekop family*

Owners



# Content

---

## 07

---

### The Company

Workmanship  
Certified Security  
The resistant guardian

---

## 14

---

### Extraordinary Rifle Storage

Panorama Gun Cabinets  
Mirror-matched Beauty  
Invisible at a glance  
Bespoke to your taste  
Detailed Specifications of Panorama I-III.

---

## 42

---

### The Lord Gun Safe

Lord 10  
Lord 5  
Lord Minimal Design  
Detailed Specifications of Lord 5-10

---

## 60

---

### Egoiste

Elegantly Secure  
Precision watch winders  
Extras For Gentlemen  
Detailed Specifications







Panorama I.  
Show Case



„We shape our homes and  
then our homes shape us.”  
– *Winston Churchill*



— Panorama I. —

Gun Cabinet



## The whole team

*Pulay Ottó*  
CEO

*Szpiszák László*  
Metal worker

*Mészáros Miklós*  
Wood shop colleague

*Kiss András*  
Varnisher

*de PüTör*  
Project manager

*Ángyellán Zoltán*  
Master upholsterer

*[Signature]*  
Wood shop colleague

*Boros-R. Attila*  
Shipping and Installation

*Juliász Attila*  
Master locksmith

*Nánási Zoltán*  
Graphic designer

*Gulácsy János*  
Engraving

*Kovács László*  
Shipping and Installation



# The Company

---

We believe in the unique combination of beauty and high-security. Since the foundation (1987) of the company, the Prekop family's aim to build unusual and unexpected safes which have not only totally personalised exterior and interior design, but offer the highest level of protection for your valuables.

Every safe is made to order and handcrafted by our highly skilled craftsmen at the home of TREZOR-LIKTOR Zrt. in Hungary. From start to finish more than 400 man-hours are spent on the planning, engineering and finishing of each TREZOR safe to achieve the harmonic marriage of design and function.

Graphic designers, metal workers, wood shop colleagues and master upholsterers ensure the excellence at every step of manufacturing. Our team use their unique expertise and knowledge to fulfil your request from finding the finest exterior and interior materials to provide the maximum security for your values in every case.

The result will be a stand-alone iconic embodiment of individuality and security what is inimitably and unmistakably yours.

---









# Timeless craft by experts

Unique details can be created if people, masters of their craft use their hands, their scrupulous eyes and their time-honored skills. It requires concentration, dedication, heart and soul of the craftsmen. This is the way we work in our factory to achieve a timeless exceptional masterpiece.

This is our philosophy.







# Certified security


---

Every customised TREZOR safe's production starts with forging of a high-security steel body which meets the European Security Standards based on EU Norm 1143-1. It is manufactured according to the strict industry standard ISO 9001 (certified by TÜV Rheinland).

The robust multi-walled door and body construction (filled with a special secret mixture of hardened steel and further materials) gains the improved extreme hard resist that cannot be penetrated by conventional tools.

For the first time in the physical security industry our master engineers have pioneered the ability to implement a special 4-sided locking boltwork in the





bulletproof glazed gun cabinet to reach an exponential degree of protection for your weapons and values. The technical construction of the Panorama gun cabinet is hidden in the frame of the door and the special boltwork denies any attempt to wedge or pry the door open.

We build Bulletproof Security Glass (BR 3 regarding to the EN 1063 Ballistic Standard) in our Panorama gun cabinets. The armoured glass is able to withstand even the most aggressive assaults without being seriously damaged.

For the desired level of burglary protection we combine the high-security steel construction with professional alarm system to ensure the 24/7 monitoring of your values.





FIREPRO  
TEST





# The resistant guardian

The Panorama gun safe hasn't been tested only in accordance with industry standards, but also under the toughest practical conditions, against fire, bullet and tool attacks. You can check out the video of the bulletproof gun cabinet test on our YouTube channel.







---

Introducing  
the Extraordinary  
**Panorama**

Gun Cabinet

---

For the Finest  
Extraordinary  
**Rifles**

---





Panorama I.







## Behind the **defence** of the glass

Your finest quality rifle and knife collection is no longer needed to be stored in secret. Thanks to the 30 mm thick bulletproof glass you can present the precious items on the most secure and elegant way.

As a brand new feature for electronic protection of glass surfaces we offer alarm glazing with immediate alarm function as well. In contrast to systems giving off an alarm in the case of glass breakage, which are installed in the room that is to be protected.





Panorama I.  
Black & White Edition



Panorama I.  
Classic

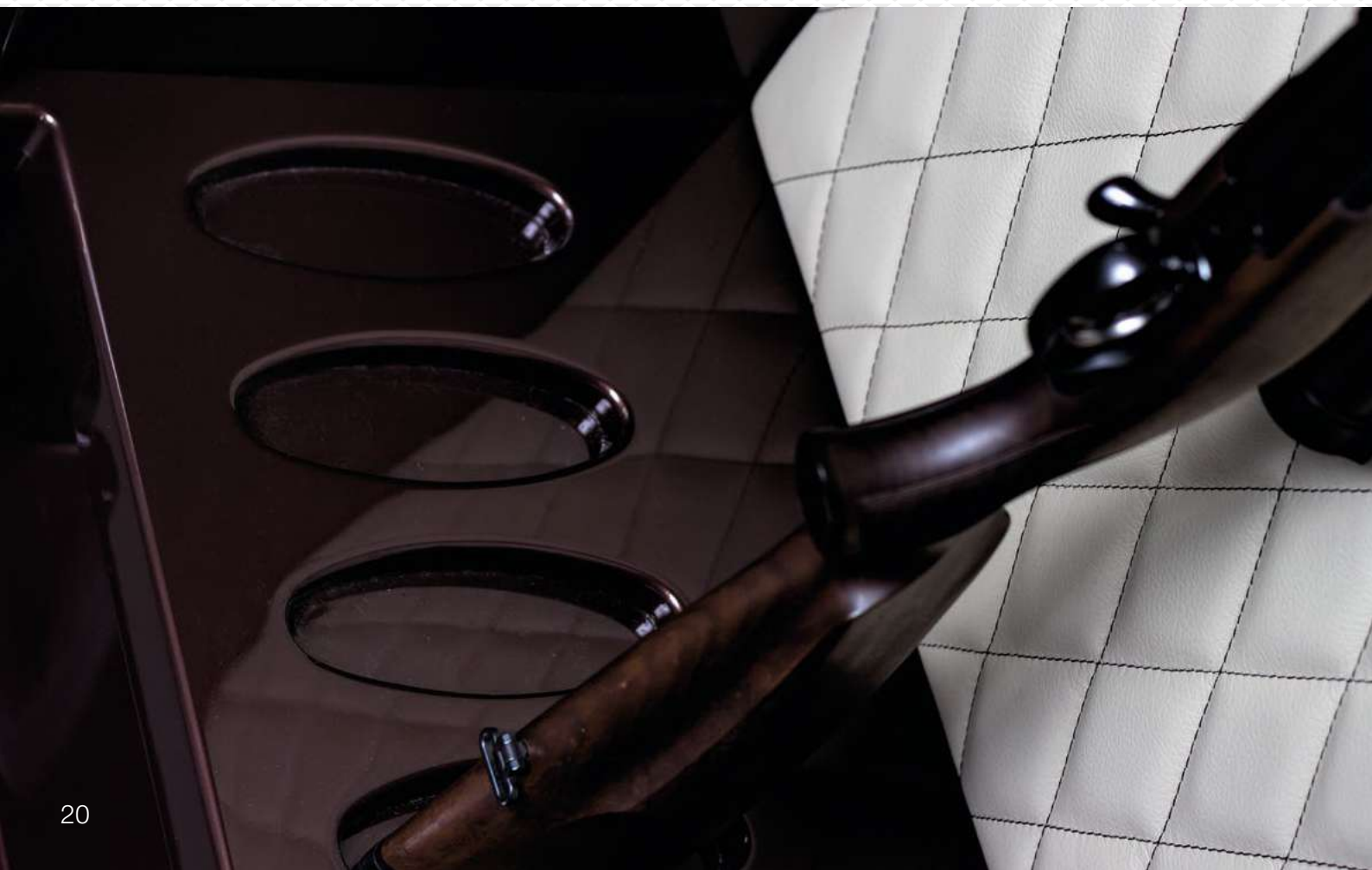




Panorama I.  
Walnut Burl Edition



Panorama I.  
Vintage Edition







Panorama I. Basic



# Blaser

## Edition Panorama I.

Sturdy, luxury gun cupboard with fine reclaimed oak frame with an antique look. Exclusive interior leather upholstery embossed with Blaser logo.

Rack for seven weapons with separate drawer for ammunition and accessories. Glass door bordered in stainless steel elements. Securely locking mechanical swivel latch lock with HideLock system.

VdS Class II certification.

Perfect in function and design - the Panorama gun cupboard is an unrivalled feature, punctuated by high-quality workmanship.

The core of the gun cupboard is a Class 0/N acc. to EN 1143-1 certified solid steel cabinet panelled in attractive reclaimed oak boards (every cabinet is unique).

The bullet-proof glass panel framed in blue-grey provides a view of the rack for seven weapons in the interior clad in real leather. The hatch in the glass panel opens easily when pressed to allow access to the HideLock system swivel latch lock.

For further informations please contact the  
Blaser Jagdwaffen GmbH.

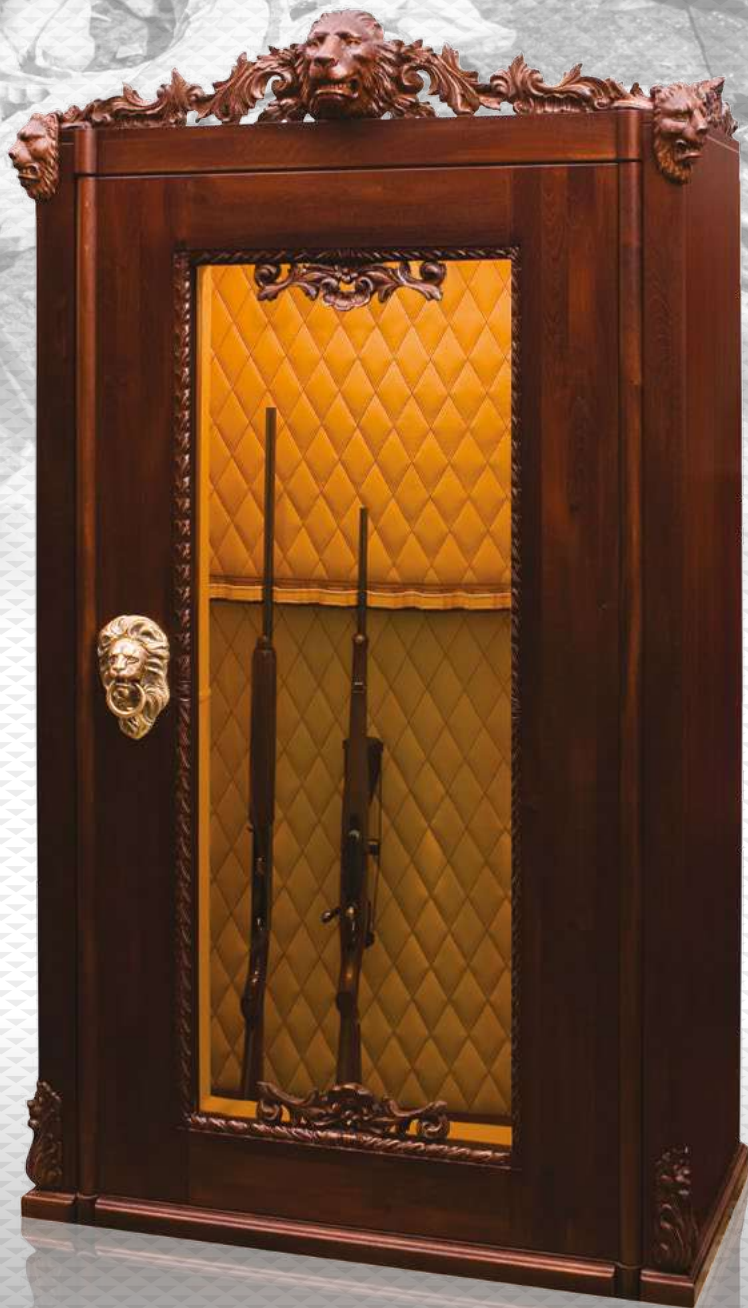
E-mail: [info@blaser.de](mailto:info@blaser.de)





# Handcarved trophies

Personalise the exterior of the gun safe with your unforgettable hunting experience. Select your favourite game, trophy or an individual motif and our master sculptor will carve, cut and chisel the wood to shape from a blank linden to a unique piece of art.













# High-Security Panorama Gun Cabinet Wall

## Ext. size (H x W x D):

- 6000 x 2800 x 800 mm

## Total weight:

- ca. 5500 kg

## Capacity:

- 22 long rifles
- 20 handguns
- 1000 ammo box

## Wood cover:

- Solid Cherrywood

## Upholstered Interior:

- Capuccino Natural Italian Leather

## Hide Lock System:

- High-Security Electronic Locks

## Glass Surface:

- BR 3 Bulletproof Glazing Combined with Intelligent Active Glass

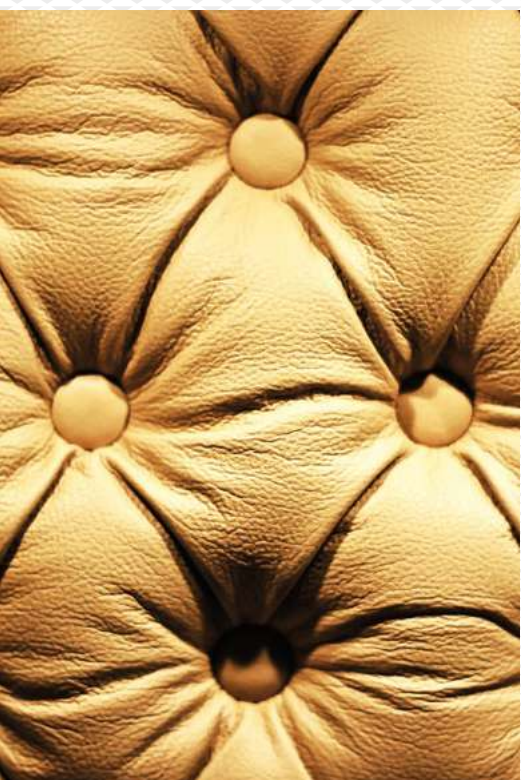
Remote Controlled Ambient LED System

Silent Alarm System

# Panorama I. Elephant Edition















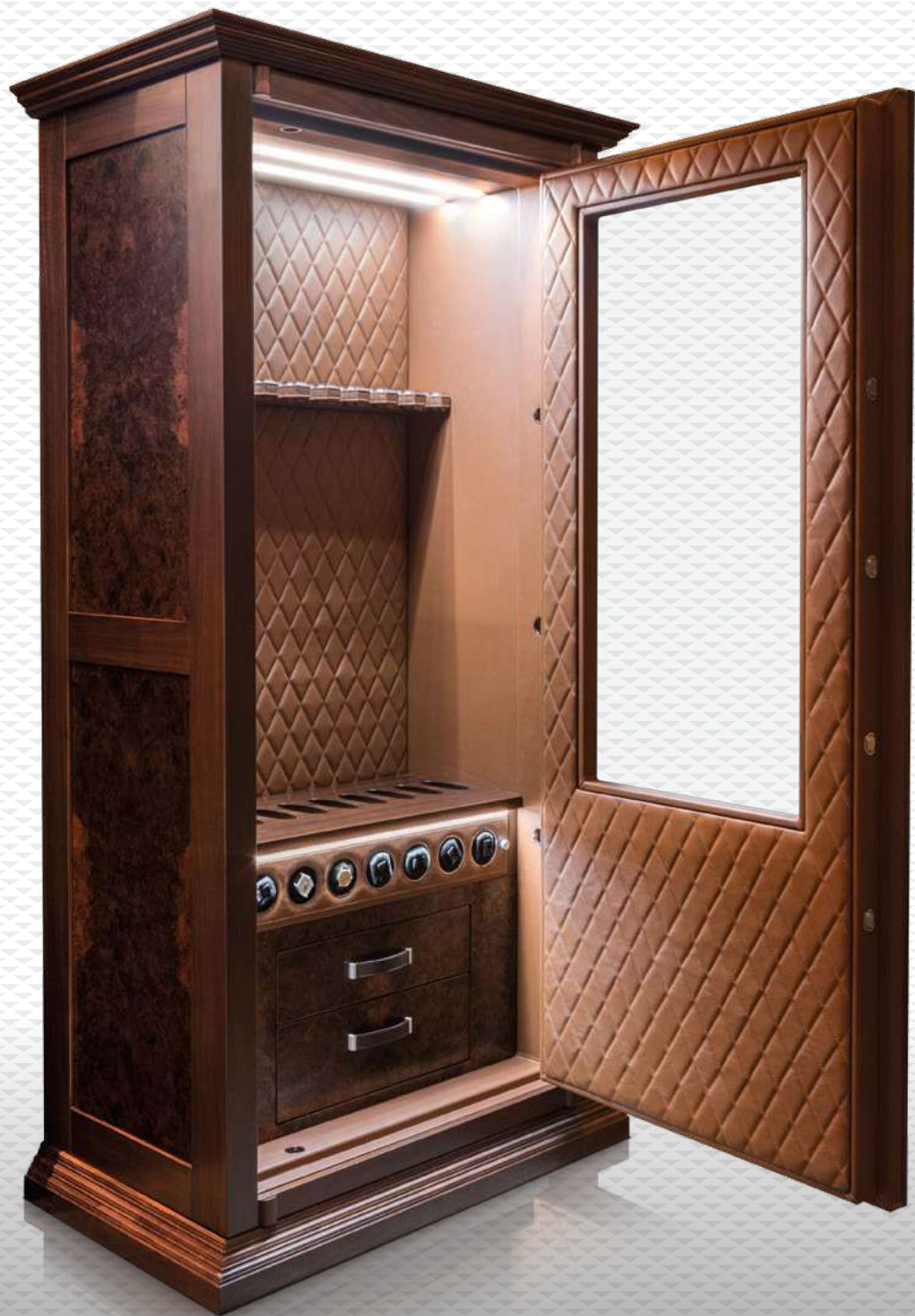
# Mirror-matched beauty

After more than 80 years of productive life of the walnut, our craftsmen start to work. We use a full set of 24 leaves from the same root ball to make the Panorama's exterior.

The carefully selected wood veneer are treated more than 4 weeks long in our workshop. It is bookmatched, softly polished and finished with three layers of clear lacquer to enhance the natural beauty of the grain pattern.



Panorama I. Walnut Edition







# Panorama II. Ash Burl Edition







# Invisibility

## at a glance

There are many situations when we don't want to make our values visible. Thanks to our new feature, called Intelligent Active Glass you can hide your stored items with a simple movement. Push the button on the special remote controll and values will be invisible at a glance. Push it again and the surface of the glass will immediately transform from private to transparency.



Transparency



Privacy

Intelligent Active Glass Surface



Bespoke  
to your taste





# Tailore

to your rifles

We focus not only on your exact specifications, but tailor the handmade gun rack to your exceptional rifles as well. Even if the bolt handle is wider, the barrel is longer or the rifle scope is higher than usual our expertise will fit the solid wood gun holder to the measurement of the rifle parts perfectly.



# DIMENSIONS



Panorama I.  
up to 10 long rifles

Panorama II.  
up to 7 long rifles



# DETAILED SPECIFICATION

## Standard Features

- Gun capacity up to 7-10 long rifles
- Grade N/0 in acc. with EN 1143-1
- Bullet-proof glazing in acc. with EN 1063
- VdS II. High-Security key lock as standard
- Solid European Oak Wood Cover (Panorama I. Classic)
- Upholstered interior with Green Carpet (Panorama I. Classic)
- Ambient neutral interior LED lights with remote controller
- Shiny chrome-plated locking bolts

## Dimensions and Weight

- External D. (H x W x D):
  - Panorama I. 1880 x 1140 x 770 mm
  - Panorama II. 1880 x 1010 x 770 mm
- Internal D. (H x W x D):
  - Panorama I. 1620 x 900 x 440 mm
  - Panorama II. 1620 x 750 x 440 mm
- Weight:
  - Panorama I. ca 890 kg
  - Panorama II. ca 690 kg
- Max. weapon length:
  - 1300 mm with ammo box
  - 1500 mm without ammo box

## Optional Features

- High-gloss lacquered finish inside and outside
- Wide choice of solid wood and veneer collections
- Electronic Alarm Glass - Intruder Detection System (IDS)
- Intelligent Active Glass Surface
- Upholstered leather interior with quilted back-plate and door cover
- Upholstered leather interior with Chesterfield back-plate and door cover
- Precision watch winders for automatic watches
- ERWIN SATTLER watchwinders (WLAN technology for individual programming)
- 4-sided locking boltwork
- Unique brass door handle
- Handcarved wood sculptures
- 24K gold-plated locking bolts
- Internal safe for ammunitions
- Drawers for hunting accessories
- Bespoke embossed monogram in the quilted back-plate
- 24/7 Monitoring Alarm System, Panic Button
- VdS II. High Security Electronic or Biometrical Lock
- Individual dimensions acc. to the customers specifications



Lord 10  
Cape Buffalo Edition





Panorama I.  
Elephant Edition





# Introducing the Lord

It looks like a classic furniture, but reveals his strength if you open its door. The elegant exterior hides a strong high-security body, available in the security classes Grade I to Grade IV.

Multi-walled armouring, 4-sided boltwork, 14 locking bolts, Hide Lock System and silent alarm system ensure the maximum level of security against the most violent attacks.



# Lord 10



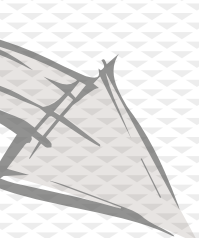








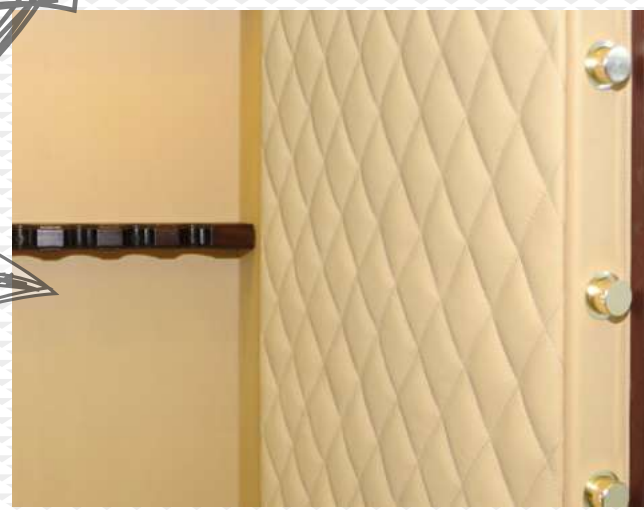




Hide Lock System

Hand stitched door panel


Gold-plated locking bolts



# Lord Minimal Design







## Embrace your **bolder** attitude

We offer you not only classic style gun safes, but also extravagant interior color combinations and design for those rule-breakers who lives the daring side of the life.

For special request we provide you with stunning and innovative materials such as the carbon fiber or the elegant and sophisticated Alcantara® which are used for Car, Aircraft and Yacht interior.

# Lord Minimal Design







# DIMENSIONS



Lord 10  
up to 10 long rifles

Lord 5  
up to 5 long rifles



# DETAILED SPECIFICATION

---

## Standard Features

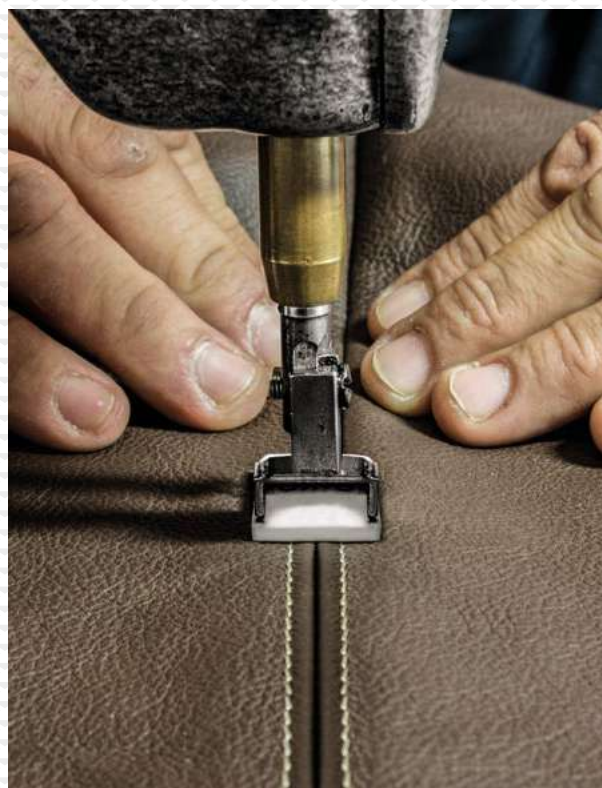
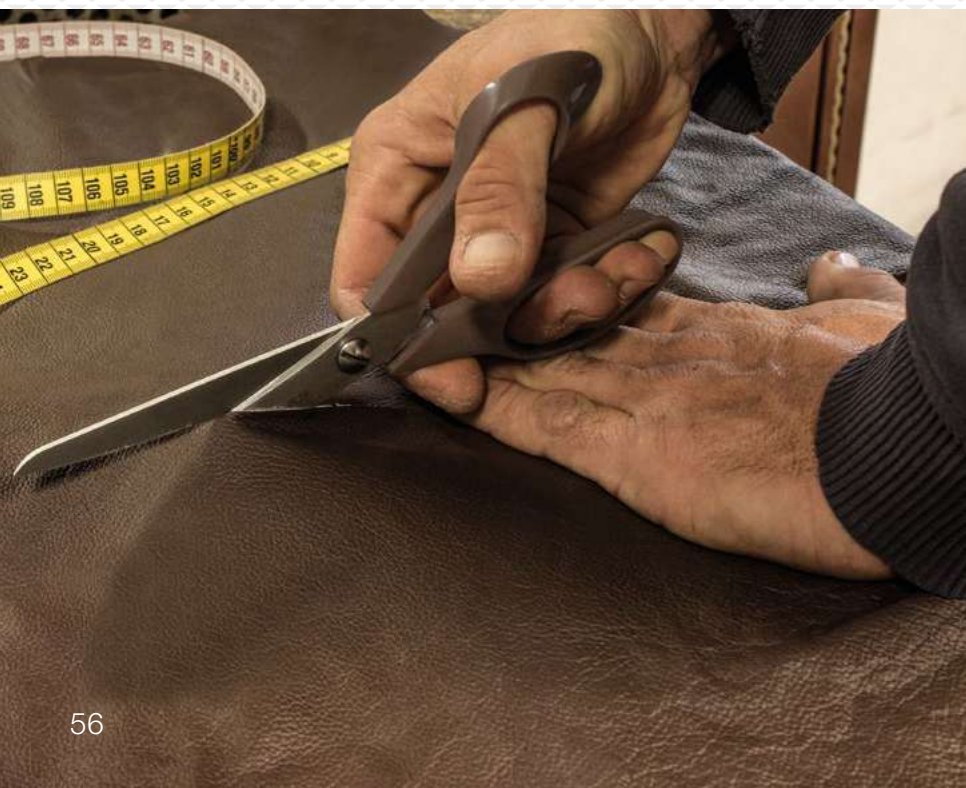
- Gun capacity up to 7-10 long rifles
- Grade I in acc. with EN 1143-1
- Hide Lock System
- VdS II. High-Security key lock as standard
- Solid European Oak Wood Cover
- Upholstered interior with Green Carpet
- Ambient neutral interior LED lights with remote controller
- Shiny chrome-plated locking bolts
- Internal safe for ammunitions

## Dimensions and Weight

- External D. (H x W x D):
  - Lord 5 1880 x 1010 x 770 mm
  - Lord 10 1880 x 1140 x 770 mm
- Internal D. (H x W x D):
  - Lord 5 1620 x 750 x 440 mm
  - Lord 10 1620 x 900 x 440 mm
- Weight:
  - Lord 5 ca 690 kg
  - Lord 10 ca 890 kg
- Max. weapon length:
  - 1300 mm with ammo box
  - 1500 mm without ammo box

## Optional Features

- Wide choice of solid wood and veneer collections
- Upholstered leather interior with quilted back-plate and door cover
- Upholstered leather interior with Chesterfield back-plate and door cover
- Precision watch winders for automatic watches
- ERWIN SATTLER watchwinders (WLAN technology for individual programming)
- Unique brass door handle
- Handcarved wood sculptures
- 24K gold-plated locking bolts
- Drawers for hunting accessories
- Bespoke embossed monogram in the quilted back-plate
- 24/7 Monitoring Alarm System, Panic Button
- VdS II. High Security Electronic or Biometrical Lock
- Individual dimensions acc. to the customers specifications





# Sense of stiched nature

If you open the heavy door of our safe you can immediately feel the natural leather aroma of the fine Italian cow hide. The leather used to upholster the safe is approximatly 15 m<sup>2</sup>. The diamond-quilted backboard and the hand stiched door panel is the classic feature of our gun cabinets's interior, harmoniously match with the carefully selected hard wood to create a beautifully balanced design.



220 209 399 289 252 301 304 207  
Desertstorm Sand Braun Hezelnut Volcano Dash Grey Black Ink



## Fine Natural Leather Collection




242 247 202 270 291 251 261 260  
Wine Parrot Pearl Pacific Oceania Carioca C. Green Maldiva





# Colourful Personality

There are more than fifteen interior leather colours that give you the opportunity to personalise the interior of the gun cabinet. Six different veneers and solid wood covers offer a choice of a traditional or modern finish of the exterior to your taste.







Oak



European Cherry



Pine

## Solid Wood Collection



European Walnut



American Cherry



Black Walnut





Vavona Burl



Santos rosewood

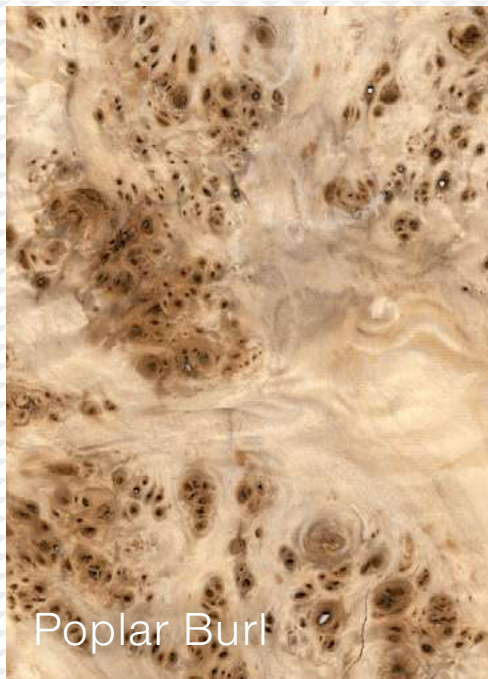


Walnut Burl

## Wood Veneer Collection



Teak



Poplar Burl



Macassar Ebony

## High-Security Safe for Gentlemen

---



---

*Egoteiste*

---



---

*„I have the simplest tastes.  
I am always satisfied with the best”*

- Oscar Wilde -







Nicolas Schiffer  
Designer of Egoiste













„Style is very personal. It has nothing to do with fashion. Fashion is over quickly. Style is forever.”

– Ralph Lauren

# Elegantly Secure

The Art Deco appearance of Egoiste hides three various high-security safes in one elegant elliptic body. Each storage unit has special multi-wall construction with Hardox Extreme layer which is the world's hardest wear plate with a nominal hardness of 60 HRC (Rockwell) and typical hardness of 650-700 HBW.

The oval shape of the two sidesafes makes the attack more difficult and the four-sided locking boltwork in the middle safe ensures the maximum protection against drilling and pry attacks.

We use heavy-duty ball-bearing hidden hinges which provides additional security.

The 120 mm thick door is secured by multiple glass re-locker (activated by heat or force) in case of attack. This tempered glass is placed between the inner door steel and the lock. If broken, through drilling or punching, it releases a secondary mechanical system which prevents movement of the boltworks.

For the maximal protection we combine the High-Security steel construction with professional alarm system to ensure the 24/7 monitoring of the owner's valuables.

The Egoiste is manufactured in accordance with the EN ISO 9001 Industry Standard (certified by TÜV Rheinland) and complies with the European Guidelines EN 1143-1 (Grade III).









# Exterior Veneers

Around 22 m<sup>2</sup> of veneer is used to furnish the Egoiste outside and inside. Every layer is lacquered, polished and fitted to the substrates by hand. The elegantly characterised veneered decoration of the safe enhances the natural ambience of the environment.

On special request we create to match our customer's requirements of superior performance in terms of fire resistance. (IMOMED, CLASS 1 and CLASS B-S1.d0 standards).

We supply the natural veneer with the widely internationally acknowledged FSC Certification to certify the sustainable origin of our wood.

Available in five finishes:













# Precision

## watch winders

Mechanical wristwatches are much more than just timepieces. The allure of this complex technology that takes up so little space and the enthusiasm for a functional accessory with an extremely high aesthetic appeal have made this wristwatch into a coveted collector's item. And thanks to the diversity than just one wristwatch with classic inner workings.

These objects lie in the safe or display case and wait to be used. Before putting the wristwatch on, the mainsprings must be tensioned, the hands must be adjusted and the date must be set. For models with full calendar in particular, this may take a little time.

With the watch winders from the Rotalis series, Erwin Sattler is offering an alternative, which provides optimum conditions for the quality pieces, guarantees a high level of technical performance and, of course, is a piece of jewellery itself.

### Highlights

- WLAN technology for individual programming
- Access to a comprehensive database that contains the rotational speeds
- Speeds as exactly specified by the manufacturer
- 12 o'clock position for optimum presentation of the timepieces
- Wristwatch holder also suitable for very large wristwatches



ERWIN SATTLER  
MÜNCHEN



# Leather

All interior hides in the Egoiste are carefully selected and hand-stitched by our craftsmen. Creating a the complete interior cover, for example, takes up to 90 hours of careful work.



Latte

Snow White

Silk Chocolate

Onyx Black





# Extras

## For Gentlemen

### Watch Winders

- Up to 16/20/24/28 pcs

### Stacking tray for watches

- Up to 8/16/24 watches

### Jewelry organizer tray

- 2 long partitions for necklaces
- 5 divisions for bracelets or earrings
- 1 ring pad with 3 slots

### Medium-sized drawers

- Up to 4 pcs

### Small drawers

- Up to 8 pcs

### Security

- VdS 2 High-Security biometrical lock
- VdS 2 High-Security electronic lock for side safes
- Silent emergency alarm
- Hidden micro CCTV camera with wireless recorder

### Accessories

- The Gentelam's Style Book I.-II. (written by Nicolas Schiffer)
- Medium-size humidor up to 150 cigars
- Portable Whisky Case
- Tablet/Smartphone charger

### Exterior Lacquering

(Instead of veneer)

- High-gloss or matt







# TECHNICAL SPECIFICATIONS

---

## Security Features

- Security Level: Grade III acc. to EN 1143-1
- VdS 2 High-Security Electronic lock (Middle Safe) as standard
- VdS 1 High-Security Mechanical key lock (Sides Safes) as standard
- 3 and 4-sided locking boltworks ( Ø 30 mm)
- Special hard plate protection of the lock and boltwork (60 HRC)
- Double-walled door filled with hardened multi-layered security composite
- 10 mm thick solid steel door leaf
- Multi-walled steel body filled with ultra high performance concrete and special steel armouring devices

## External Dimensions (H x B x D)

- 1320 x 1220 x 635 mm

## Internal Dimensions (H x B x D)

- 720 x 430 x 350 mm - Middle Safe
- 720 x 210 x 210 mm - Size Safes

## Height of the base

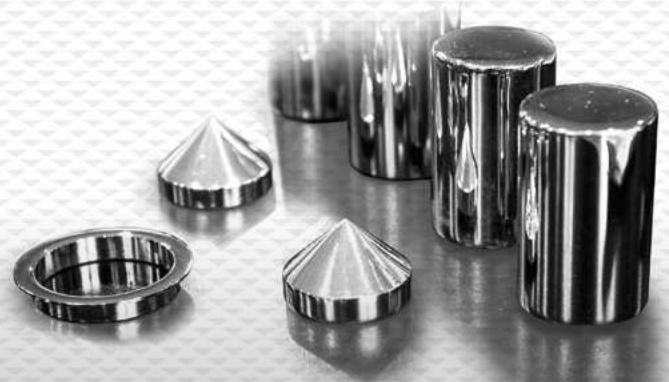
- 410 mm

## Volume

- 171 l

## Weight

- 930 kg





# BASIC FEATURES

**4 watch winders**  
for automatic watches

**2 small-sized drawers**  
for ties and bow ties

**2 middle-sized drawers**  
for accessories

**4-4 small cases**  
for jewelry



 NEMESIS 

---

One of One





T

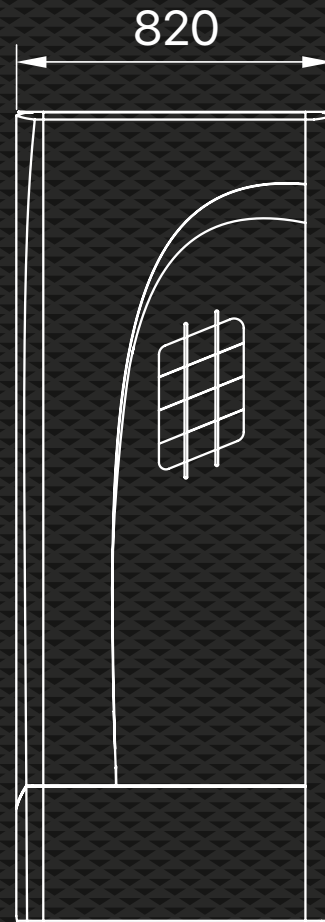
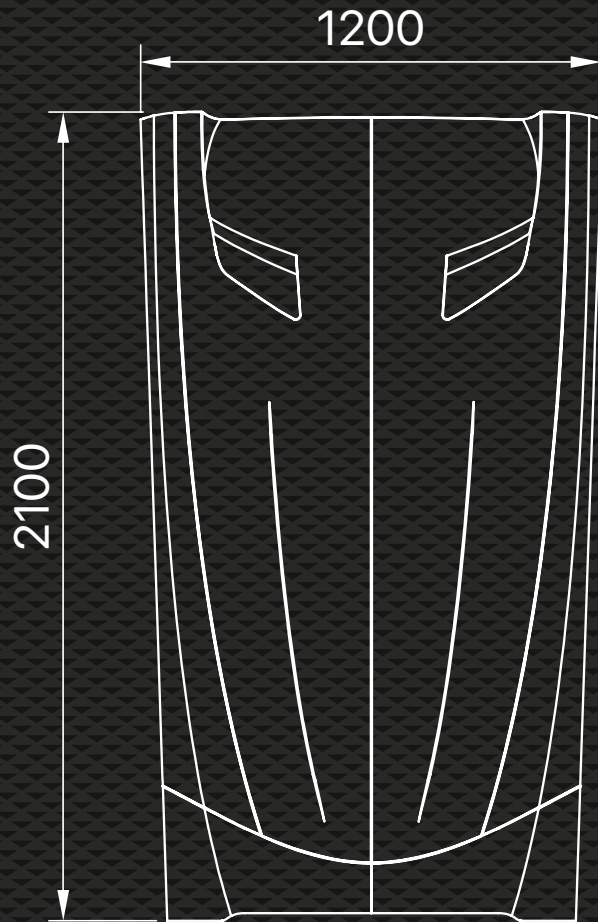
NEMESIS







# DIMENSIONS





# HIGHLIGHTS

- 32 pcs carbon folders for the car's documentation,
- Exterior and interior fitted with original parts of the Gullwing,
- 4 pcs Erwin Sattler watch winder for automatic watches,
- VdS III. High-Security Safe for the car keys,
- Interior upholstered with Alcantara,
- Tablet with a special digital clock in style of 300 SL cockpit,
- Own iOS Application for the open/close of the safe, moving the watch winders, incl. complete documentation of the owned Gullwing, etc.

# DIMENSIONS AND WEIGHT

External D. (H x W x D):

- Closed: 2100 x 1200 x 820 mm
- Opened: 2550 x 2200 x 820 mm

Weight:

- ca 800 kg



— TREZOR —  
HIGH SECURITY SAFES  
HANDCRAFTED IN HUNGARY

TREZOR-LIKTOR Zrt., believes the specifications to be correct at the time of printing. However, specifications, standard features and options are subject to change without notice.

Colours may vary. Some options maybe unavailable when a the safe (Panorama, Lord, Egoiste) is built. Images may show optional equipment (rifles, watches, knives) and specific may differ.

No liability is assumed by TREZOR-LIKTOR Zrt. Additional information may be obtained from your TREZOR Manufacture authorised dealership.

TREZOR Manufacture name and logo are registered trademarks (Nr.: 202177) owned by and licensed to TREZOR-LIKTOR Zrt.

Edition: 1/17  
Printed in Hungary



[www.luxtrezor.sk](http://www.luxtrezor.sk)

[ltrezor@gmail.com](mailto:ltrezor@gmail.com) | +421 905 321 987

TREZOR-LIKTOR Zrt. | Illésházi u. 18. | Békéscsaba H-5600